

Assembling the Color Computer Program Pak Box

https://youtu.be/K_0Fm6SYeZY

Required Tools:

- Stiff Flat Ruler
- Sharp Edge of a Table
- Adhesive transfer tape gun
- Tape



Step 1: Pre-fold all scores and perforations. Use straight edge and table to pre-fold scores near the small window. See video.

Step 2: Lay box face down on flat surface.

Step 3: Fold inside of box over on score #1.

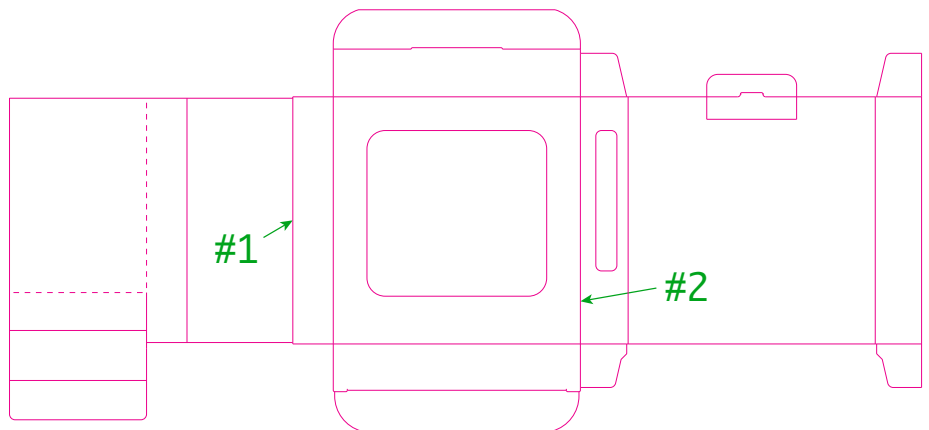
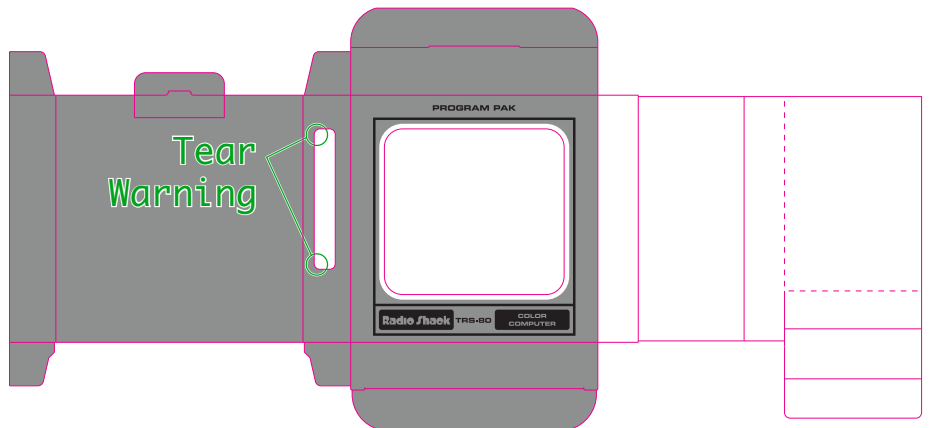
Step 4: Fold back of box over on score #2.

Step 5: Flip box over, face up.

Step 6: Apply glue to tab #3.

Step 7: Fold glue flap over on score #4. Apply pressure with your hand.

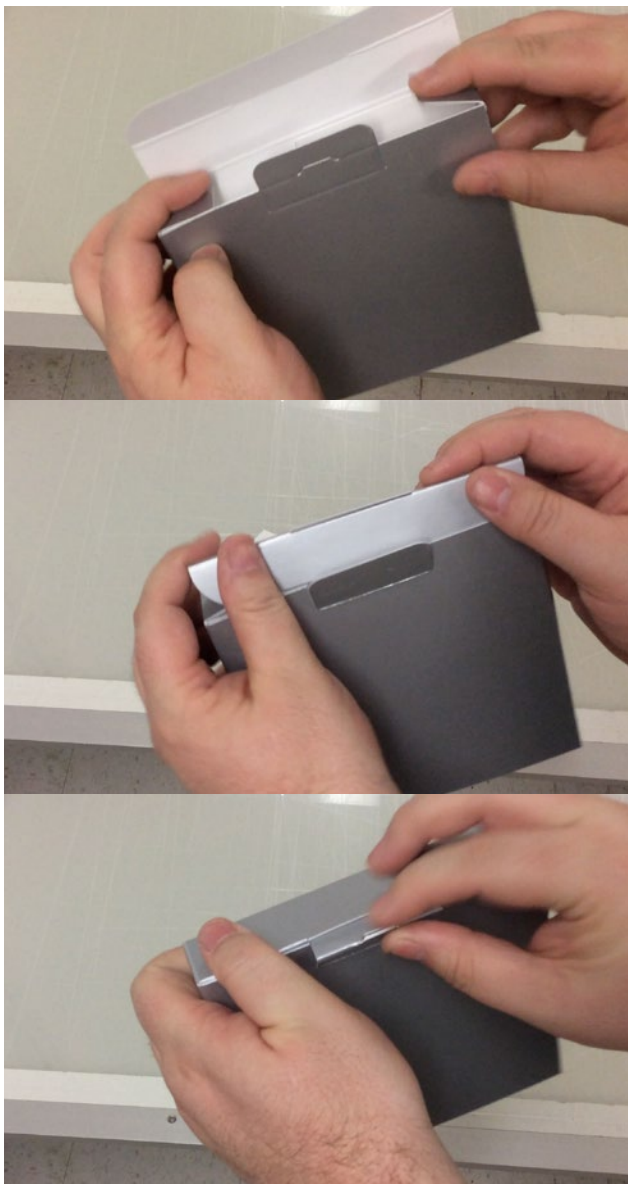
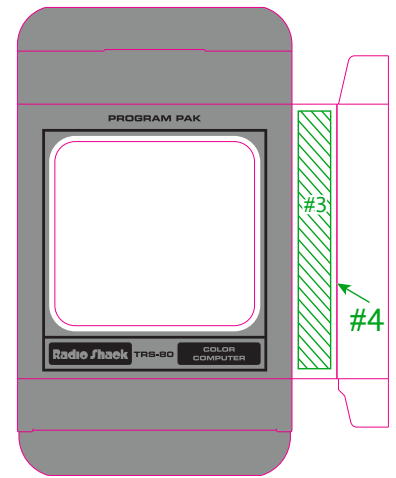
Step 8: Pick up and fluff box open.



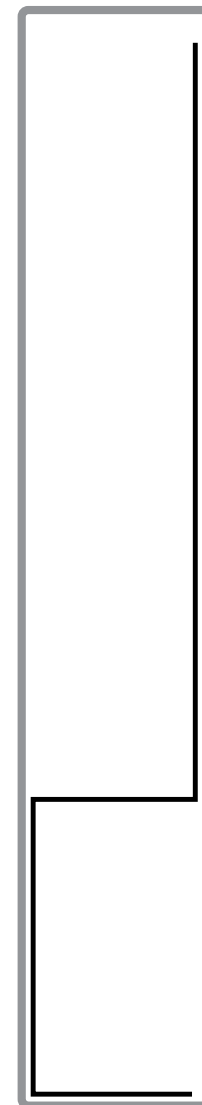
Step 9: Fold cartridge ledge into position. See ledge detail.

Step 10: Fold in bottom tabs, then fold and tuck in bottom flap.

Step 11: On the top of the box, move locking tab away from box. Fold in top tabs. Fold in top flap. Then fold in locking tab



Step 11: Folding the top flap.



Step 9: Ledge Detail. Cut away view from side of box.